

---

## SUPPLIES:

---

Your care and maintenance supplies should include:

- 1 . **A flexible brush** to clean the inside of the tubing.
- 2 . **A mouthpiece brush** to keep the mouthpiece clean.
- 3 . **Tuning slide grease** to make the slides work smoothly.
- 4 . **HornStuff Bearing and Lever Oil** for free working valves and levers.
- 5 . **HornStuff Pro Oil** for the body of the rotors.
- 6 . **French Horn string** for good action.
- 7 . **Screwdriver** to use when replacing string.

---

## QUESTIONS

---

If you have any questions, log on to:

<http://hornstuff.com>

Or contact:

rob@HornStuff.com

---

## FRENCH HORN CARE INSTRUCTIONS

---



<http://hornstuff.com>  
E-mail: [rob@HornStuff.com](mailto:rob@HornStuff.com)

## FLEXIBLE BRUSH

Use the flexible brush with a little soap and water to clean the inside of the mouthpipe and slide tubes. Do not try to force it around sharp bends in the tubing! Do this about once a month.

## MOUTHPIECE BRUSH

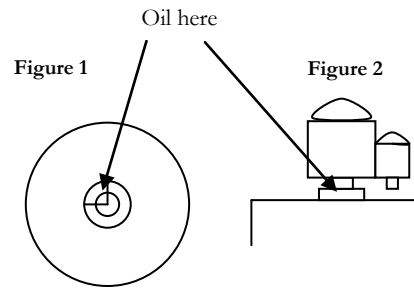
The mouthpiece brush is used with soap and water to keep the mouthpiece clean. Clean the mouthpiece once a week for best results.

## TUNING SLIDE GREASE

Wipe old grease from slide tubing with a paper towel. Apply new grease evenly around tubing. Insert the slide tubes individually, if possible. Work the tubes back and forth until they work smoothly. Wipe off excess grease. If the excess grease is dirty, wipe the grease off and start again. If the excess grease is clean, reassemble the slide.

## HORNSTUFF BEARING AND LEVER OIL

The most important places to oil on a rotary valve are the bearings. There is a bearing at each end of the rotor. One is located under the valve cap on the front of the Horn (Figure 1), while the other is to be found under the stop-arm on the back of the Horn (Figure 2). One or two drops of oil placed on these bearings each week should keep the valves turning smoothly. One or two drops on each of the lever springs will keep the springs and the steel rod that holds the levers in place free of rust.



## HORNSTUFF PRO OIL

If the valves are still sluggish after oiling the bearings, it may be necessary to drop some oil down the slide tubes of the sluggish valve. Take the instrument to a qualified repairman for cleaning if oiling does not work.

## FRENCH HORN STRING AND SCREWDRIVER

Remove all old string from the valve by loosening the string holding screws marked by arrows in Figure 8. There is a knot in one end of the string that is too large to pull through the small hole near the top of the valve lever. Thread the long end of the string through the small hole at the top of the valve lever as shown in Figure 3.

Figure 3

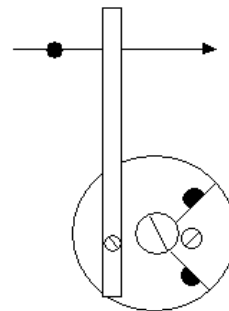
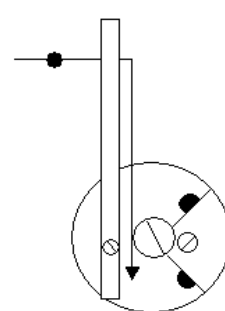


Figure 4



Pull the long end of the string between the lever and the stop-arm (Figure 4). Continue

to wrap the string around the stop-arm and the string holding screw to form a "figure eight" as pictured in Figure 5.

Figure 5

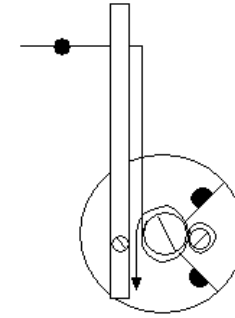
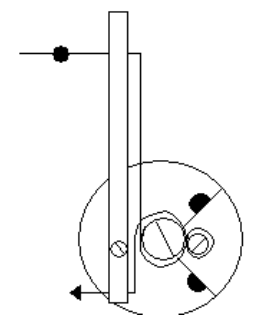


Figure 6



Thread the string through the small hole at the bottom of the lever (Figure 6). Wrap the string around the small string holding screw at the bottom of the lever (Figure 7).

Figure 7

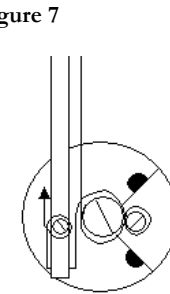
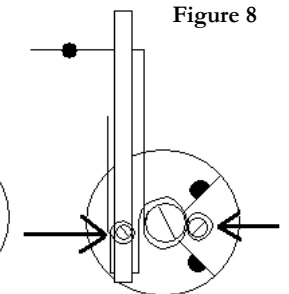


Figure 8



Tighten the two screws marked by arrows in Figure 8 while pulling the string tight by the end without the knot. Slightly loosening the screw marked by the arrow on the right (Figure 8) will allow adjustment of the lever to match the height of the other levers. Tighten this screw, and any others that might be loose, and cut off the excess string. Touch the freshly cut end briefly with a flame to avoid fraying.